



With unmatched inner strength and efficiency, combined with reliability and precision performance, Yamaha engines will give you an exceptional ride and efficient fuel consumption.

PURSUIT BOATS • 3901 ST. LUCIE BLVD • FORT PIERCE, FLORIDA 34946 • 800.947.8778 • PURSUITBOATS.COM

*Pursuit reserves the right to change boat specifications, equipment, color schemes, and pricing, and/or discontinue models at any time without notice or obligation.
Some of the boats shown include optional or dealer-installed equipment. Please see your local dealer for more information.*

05 385
OFFSHORE




PURSUIT



OUR FLAGSHIP | Enjoy the View

OS 385
OFFSHORE



The new OS 385 is the flagship model of the Pursuit fleet of premium offshore boats. Measuring just under 40 feet in length, our newest vessel has all the comforts of home plus a 360-degree water view!

The fully integrated hardtop and windshield are engineered to support an optional factory built tower with combination cushioned seating/leaning post. The tower option comes complete with a fiberglass top and console with controls and matching Yamaha command link plus gauges.

The 385 combines the performance, seaworthiness and fishability of the world's top inboard convertible and express offerings with the luxury interior appointments of most comfortable cruisers. Dependable Yamaha outboards on the transom not only increase her overall performance but also open up valuable space for additional storage and accommodations. Its sleek, express style with a 13-foot beam results in an expansive cockpit and roomy interior below decks.

Structural and sound deadening insulation materials matched to proprietary stringer and assembly processes result in one of the quietest cabin environments in the market. Every inch of this boat exudes yacht caliber fit and finish, from its beefy grab rails, to its bow thruster, to its Corian®-countered gourmet kitchen — complete with a two-burner glass stovetop, microwave, 7.5 cubic-foot stainless steel refrigerator/freezer and fiberglass sink with hot and cold pressurized water.



OUR FLAGSHIP | Enjoy the View

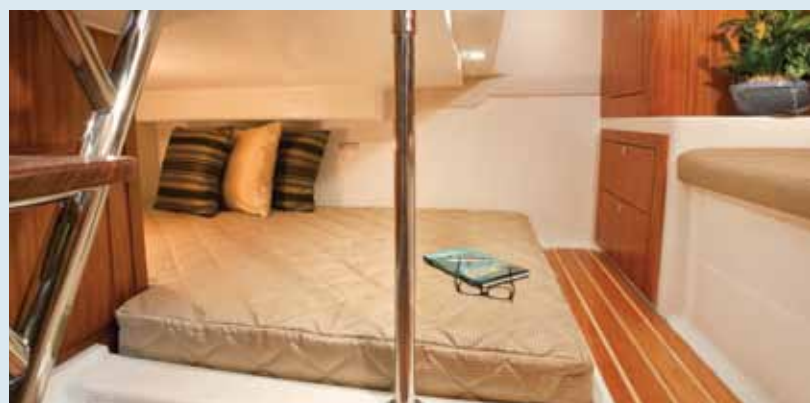
OS 385
OFFSHORE

If you've been yearning for outstanding performance and yacht class design, without the constant maintenance and expense, the OS 385 is the answer to your dreams. Below decks, light-colored interior woods, exquisite fabrics and strategically located ports make the interior spacious, stylish and inviting. Forward of the galley, the convertible dinette seats you and your guests for a comfortable dinner at the custom lacquered wood table. Amidships you'll find a double berth that can accommodate two

adults, complete with a convenient settee with sitting headroom and reading lights. The head features a separate stand-alone shower compartment finished in a frosted smoked green acrylic.



Visit your factory Authorized Pursuit Dealer today to make those dreams reality.



SPECIFICATIONS

L.O.A. w/Pulpit	39' 2" (11.94 m)
Beam	13' 0" (3.96 m)
Hull Draft	
(motors up)	25" (0.63 m)
(motors down)	42" (1.06 m)
Clearance w/Hard-Top	
(from waterline)	10' 10" (3.30 m)
Approx. Dry Weight	
(triple 350 engines)	18,985 lbs (8,611 kg)
Fuel Capacity	370 U.S. gallons (1,400 L)
Fresh Water Capacity	65 U.S. gallons (246 L)
Holding Tank Capacity	18 U.S. gallons (68 L)
Livewell Capacity	50 U.S. gallons (189 L)
Fishbox Capacity	2 @ 68 U.S. gal. (2 @ 257 L)
Max. Horsepower	1050 h.p.
Sleeping Capacity	4
Deadrise	18°



05 385
OFFSHORE

